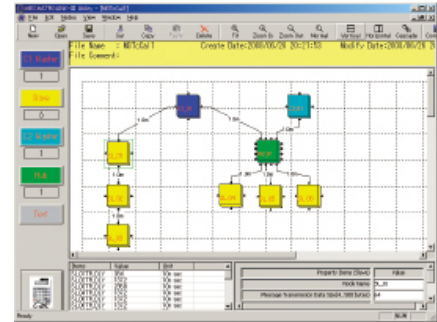


MECHATROLINK Members Association

MECHATROLINK-III Utility Software

Features

- System configuration is defined by putting the icons (C1/C2 master, slave, Hub) and connecting them with lines in the canvas and setting the parameters such as communication data size, cable length, retry times, and so on. This software calculates the minimum transmission cycle time in that system.
- This software is free for MMA members. MMA members can download it from MMA website for MMA members only.



Contact Information

MECHATROLINK Members Association

MMA Japan (Head Office)	480 Kamifujisawa, Iruma, Saitama, 358-0013 Japan	TEL : +81-4-2962-7920	FAX : +81-4-2962-6343
MMA Germany	Hauptstr. 185 65760 Eschborn Germany	TEL : +49-6196-569420	
MMA U.S.	2121 Norman Drive South, Waukegan, IL 60085, U.S.A.	TEL : +1-847-887-7231	
MMA Korea	35F, Three IFC, 10 Gukjegeumyung-ro, Yeongdeungpo-gu, Seoul	TEL : +82-2-368-8875	
MMA China (Shenyang Office)	No.16, East Nanping Road, Hunnan High-tech, Industrial Development Zone, Shenyang, 110171 CHINA	TEL : +86-24-24696016	
MMA China (Shanghai Office)	22/F One Corporate Avenue No.222 Hubin Road, Huangpu District Shanghai, 200021 CHINA	TEL : +86-21-53852070	
MMA Taiwan	12F., No.207, Sec. 3, Beixin Rd., Xindian Dist., New Taipei City 231, Taiwan (R.O.C.)	TEL : +886-2-8913-1333	
MMA Asean	151 Lorong Chuan, #04-02A, New Tech Park, SINGAPORE 556741	TEL : +65 6488 8365	
MMA India	17/A, 2nd Main, Electronic City, Phase-1, Hosur Road, Bengaluru - 560 100, INDIA	TEL : +91-80-4244-1920	

E-mail : mma@mechatrolink.org

URL : <http://www.mechatrolink.org>