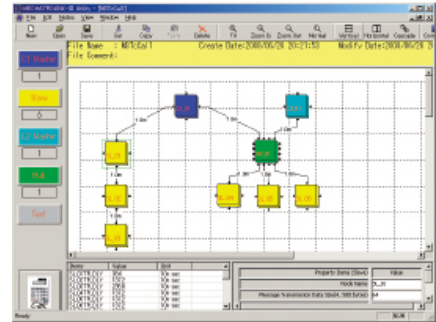


MECHATROLINK协会

MECHATROLINK-III Utility Software

Features

- System configuration is defined by putting the icons (C1/C2 master, slave, Hub) and connecting them with lines in the canvas and setting the parameters such as communication data size, cable length, retry times, and so on. This software calculates the minimum transmission cycle time in that system.
- This software is free for MMA members. MMA members can download it from MMA website for MMA members only.



Contact Information

MECHATROLINK 协会

日本总部	480 Kamifujisawa, Iruma, Saitama, 358-0013 Japan	TEL : +81-4-2962-7920	FAX : +81-4-2962-6343
德国分部	Hauptstr. 185 65760 Eschborn Germany	TEL : +49-6196-569420	
美国分部	2121 Norman Drive South, Waukegan, IL 60085, U.S.A.	TEL : +1-847-887-7231	
韩国分部	35F, Three IFC, 10 Gukjegeumyung-ro, Yeongdeungpo-gu, Seoul	TEL : +82-2-368-8875	
中国分部 (沈阳办事处)	中国辽宁省沈阳市浑南高新技术产业开发区南屏东 路16号	TEL : +86-24-24696016	
中国分部 (上海办事处)	上海市湖滨路222号企业天地1号楼22階	TEL : +86-21-53852070	
台湾分部	12F., No.207, Sec. 3, Beixin Rd., Xindian Dist., New Taipei City 231, Taiwan (R.O.C.)	TEL : +886-2-8913-1333	
MMA Asean	151 Lorong Chuan, #04-02A, New Tech Park, SINGAPORE 556741	TEL : +65 6488 8365	
印度分部	17/A, 2nd Main, Electronic City, Phase-1, Hosur Road, Bengaluru - 560 100, INDIA	TEL : +91-80-4244-1920	

E-mail : mma@mechatrolink.org

URL : <http://www.mechatrolink.org>